

Countryside Lake II Add.

# COUNTRYSIDE LAKE II

## AN ADDITION TO THE CITY OF MCPHERSON, KANSAS

### OWNER'S CERTIFICATION AND DEDICATION:

STATE OF KANSAS }  
COUNTY OF MCPHERSON } SS

THIS IS TO CERTIFY THAT THE UNDERSIGNED OWNERS OF THE LAND DESCRIBED IN THE SURVEYOR'S CERTIFICATE; HAVE CAUSED THE SAME TO BE SURVEYED AND SUBDIVIDED ON THE ACCOMPANYING PLAT INTO LOTS, BLOCKS, STREETS, AND OTHER PUBLIC WAYS UNDER THE NAME OF "COUNTRYSIDE LAKE II"; (AN ADDITION TO THE CITY OF MCPHERSON, MCPHERSON COUNTY, KANSAS); THAT ALL HIGHWAYS, STREETS, ALLEYS, EASEMENTS AND PUBLIC GROUNDS AS DENOTED ON THE PLAT ARE HEREBY DEDICATED TO AND FOR THE USE OF THE PUBLIC FOR THE PURPOSE OF CONSTRUCTING, OPERATING, MAINTAINING AND REPAIRING PUBLIC IMPROVEMENTS; AND FURTHER THAT THE LAND CONTAINED HEREIN IS HELD AND SHALL BE CONVEYED SUBJECT TO ANY APPLICABLE RESTRICTIONS, RESERVATIONS, AND COVENANTS NOW ON FILE OR HEREAFTER FILED IN THE OFFICE OF THE REGISTER OF DEEDS OF MCPHERSON COUNTY, KANSAS.

ROBERT L. PERRIN \_\_\_\_\_ DATE \_\_\_\_\_  
RITA K. PERRIN \_\_\_\_\_ DATE \_\_\_\_\_

GLEN L. CHRISTENSEN \_\_\_\_\_ DATE \_\_\_\_\_  
MAURINE CHRISTENSEN \_\_\_\_\_ DATE \_\_\_\_\_

OWNERS: LOT 10, BLOCK 1

### NOTARY CERTIFICATE:

STATE OF KANSAS }  
COUNTY OF MCPHERSON } SS

THE FOREGOING INSTRUMENT WAS ACKNOWLEDGED BEFORE ME THIS 22<sup>nd</sup> DAY OF August, 1980, BY John Brouch, NOTARY PUBLIC; MY APPOINTMENT EXPIRES: December 31, 1982

### PLANNING COMMISSION CERTIFICATE:

STATE OF KANSAS }  
CITY OF MCPHERSON } SS

THIS PLAT WAS APPROVED BY THE MCPHERSON CITY PLANNING COMMISSION ON August 24, 1980, AND WAS RECOMMENDED FOR APPROVAL BY THE GOVERNING BODY OF THE CITY OF MCPHERSON, KANSAS.

SIGNED: August 24, 1980

BY William W. Hubbs, CHAIRMAN  
ATTEST: Melvin J. Tamm, SECRETARY

### COUNTY CLERK AND CITY CLERK CERTIFICATE:

STATE OF KANSAS }  
COUNTY OF MCPHERSON } SS  
CITY OF MCPHERSON

WE, THE UNDERSIGNED, COUNTY CLERK OF MCPHERSON COUNTY, KANSAS, AND CITY CLERK OF THE CITY OF MCPHERSON, KANSAS, WITHIN OUR RESPECTIVE JURISDICTIONS, DO HEREBY CERTIFY THAT AT THE DATE OF THIS CERTIFICATE, ALL CURRENTLY DUE AND OWING TAXES AND SPECIAL ASSESSMENTS OF ANY KIND ASSESSED AGAINST ANY OF THE LAND INCLUDED IN THIS PLAT, HAVE BEEN PAID.

DATE SIGNED: August 22, 1980

Margaret Bryan, COUNTY CLERK

DATE SIGNED: August 8, 1980

John Peterson, CITY CLERK

### CERTIFICATE AS TO CITY PUBLIC IMPROVEMENTS:

STATE OF KANSAS }  
CITY OF MCPHERSON } SS

WE, THE UNDERSIGNED, DO HEREBY CERTIFY THAT THE REQUIRED GUARANTEES ARE POSTED WITH THE CITY FOR THE COMPLETION OF THE IMPROVEMENTS COVERING ALL STREETS, STORM SEWERS, SANITARY SEWER SYSTEM, AND DOMESTIC WATER SUPPLY AND DISTRIBUTION SYSTEM PERTAINING TO THE SUBJECT PLAT AND NOT UNDER OTHER FEDERAL, STATE, OR COUNTY COMPLETION OBLIGATIONS; WHICH ARE BASED ON A LICENSED ENGINEER'S PLANS AND SPECIFICATIONS; AND WHICH ARE APPROVED BY ALL PUBLIC AUTHORITIES HAVING JURISDICTION.

DATE SIGNED: August 22, 1980

Richard Steyer, CITY ENGINEER; CITY OF MCPHERSON, KANSAS

DATE SIGNED: Aug 21, 1980

John Peterson, GENERAL MANAGER OF BOARD OF PUBLIC UTILITIES, CITY OF MCPHERSON, KANSAS

### GOVERNING BODY CERTIFICATE:

STATE OF KANSAS }  
CITY OF MCPHERSON } SS

THIS PLAT APPROVED AND ALL DEDICATIONS SHOWN HEREON, IF ANY, ARE HEREBY ACCEPTED BY THE GOVERNING BODY OF THE CITY OF MCPHERSON, KANSAS, ON Aug 8, 1980.

### COUNTY COMMISSIONERS' CERTIFICATE:

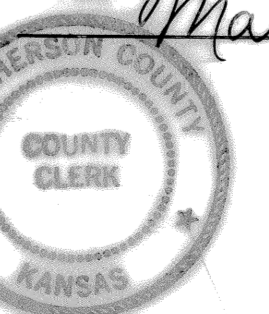
STATE OF KANSAS }  
COUNTY OF MCPHERSON } SS

THE DEDICATIONS SHOWN ON THIS PLAT ARE HEREBY ACCEPTED BY THE BOARD OF COUNTY COMMISSIONERS, MCPHERSON COUNTY, KANSAS, ON August 25, 1980.

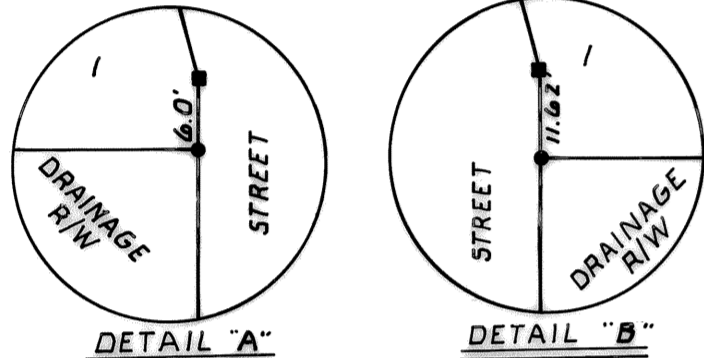
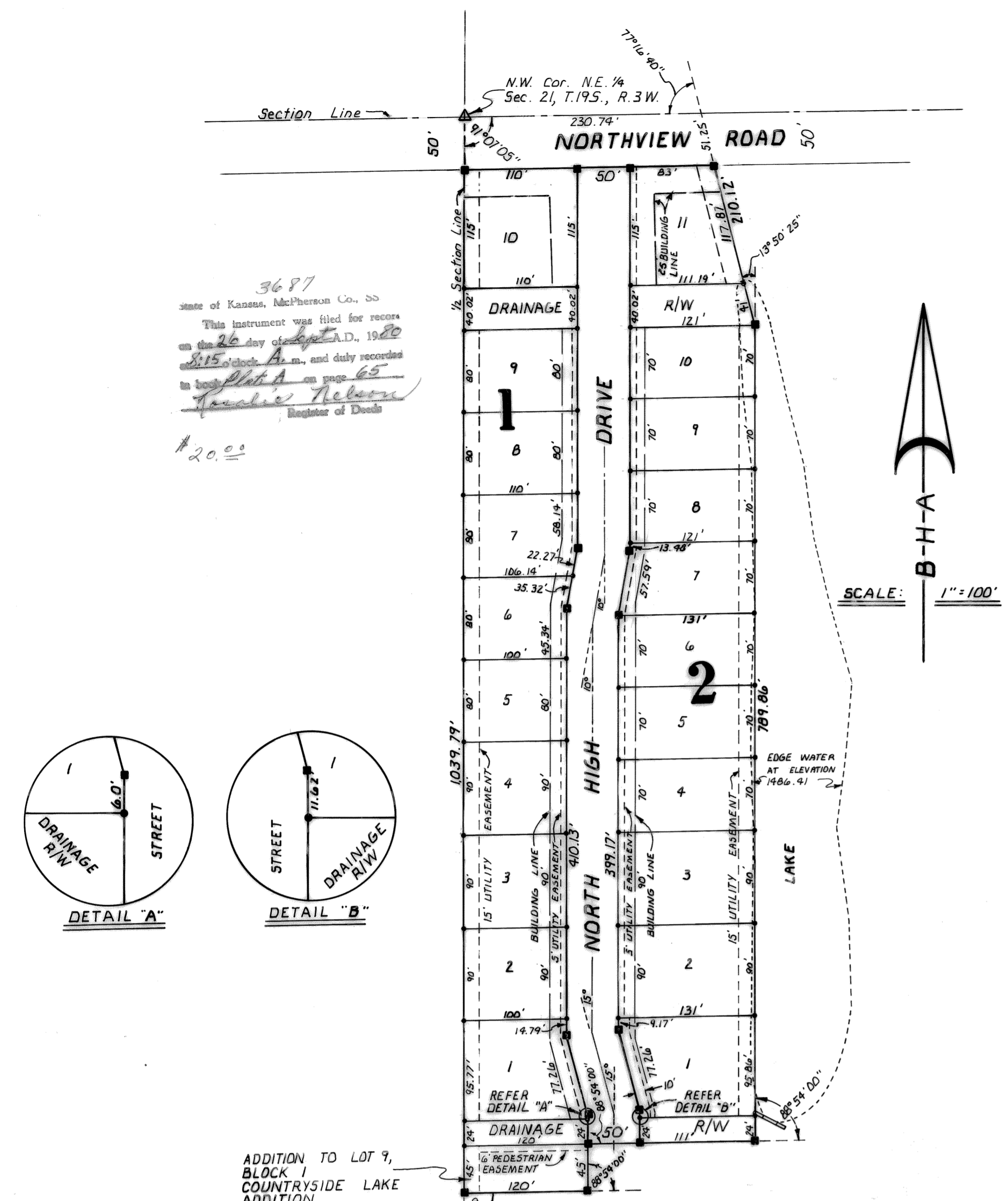
ENTERED ON TRANSFER RECORD ON August 25, 1980

Margaret Bryan, COUNTY CLERK

ATTEST: John Peterson, MAYOR  
John Peterson, CITY CLERK  
Margaret Bryan, CITY ATTORNEY



REGISTER OF DEEDS CERTIFICATE



LEGEND  
■ CONCRETE MONUMENT  
● IRON BAR  
△ GOVERNMENT MARKER

**SIDEWALKS**  
A 4' SIDEWALK SHALL BE INSTALLED ALONG THE EAST LINE OF LOTS 1 THROUGH 10, BLOCK 1. THE SIDEWALK SHALL BE CONSTRUCTED AT THE SAME TIME AS THE HOUSING IMPROVEMENT OF SAID LOT

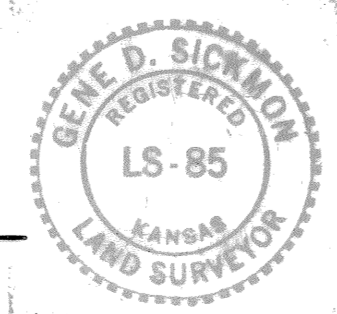
### SURVEYOR'S CERTIFICATE AND DESCRIPTION:

I, THE UNDERSIGNED, LICENSED PROFESSIONAL LAND SURVEYOR OF THE STATE OF KANSAS, DO HEREBY CERTIFY THAT THE FOLLOWING DESCRIBED TRACT OF LAND WAS SURVEYED ON JULY 30, 1980 AND THE ACCOMPANYING FINAL PLAT PREPARED, AND THAT ALL THE MONUMENTS SHOWN HEREIN ACTUALLY EXIST AND THEIR POSITIONS ARE CORRECTLY SHOWN TO THE BEST OF MY KNOWLEDGE AND BELIEF:

COMMENCING AT THE N.W. CORNER OF THE N.E. 1/4, SECTION 21, TOWNSHIP 19 SOUTH, RANGE 3 WEST, OF THE 6<sup>TH</sup> P.M., MCPHERSON COUNTY, KANSAS FOR A PLACE OF BEGINNING; THENCE SOUTH ALONG THE WEST LINE OF SAID N.E. 1/4 A DISTANCE OF 1039.79'; THENCE EAST (DEFLECTION ANGLE 41°06'00" LEFT) A DISTANCE OF 120.00'; THENCE NORTH (DEFLECTION ANGLE 88°54'00" LEFT) A DISTANCE OF 45.00'; THENCE EAST (DEFLECTION ANGLE 88°54'00" RIGHT) A DISTANCE OF 161'; THENCE NORTH (DEFLECTION ANGLE 88°54'00" LEFT) A DISTANCE OF 787.86'; THENCE NORTHWESTERLY (DEFLECTION ANGLE 13°50'25" LEFT) A DISTANCE OF 210.12' TO THE NORTH LINE OF SAID N.E. 1/4; THENCE WEST (DEFLECTION ANGLE 77°16'40" LEFT) ALONG THE NORTH LINE OF SAID N.E. 1/4 A DISTANCE OF 230.74' TO THE PLACE OF BEGINNING. SAID TRACT CONTAINS APPROXIMATELY 6.42 ACRES.

SIGNED August 1, 1980.

Gene D. Sickmon  
GENE D. SICKMON R.L.S. #85



Ordinance # 2040  
Amendment (6-42 A)  
7-236 8-258